



NCL Series

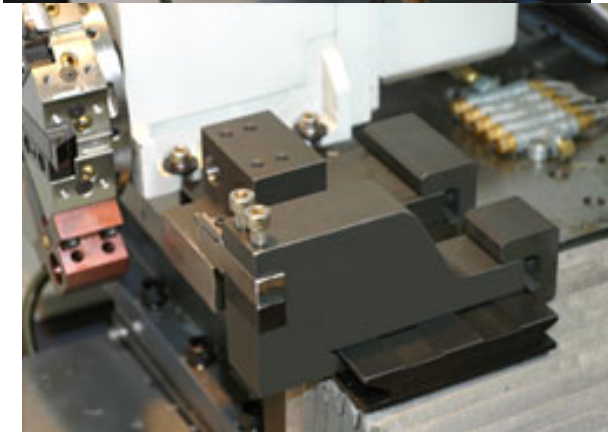
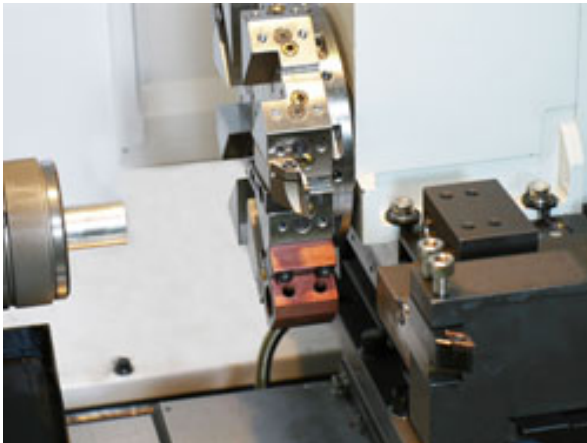
High performance Steel Bar/Part Turning Center

ARIX CNC Turning centers include the most innovative designs as the mineral stone filled base for high damping capacity, symmetrical ribs design for stability and rigidity, large headstock casting with a two pieces design for easy alignment; optional embedded chip conveyor that gives best sealing and efficient chip removal. The NN type bearings spindle design guarantees the best performance turning.

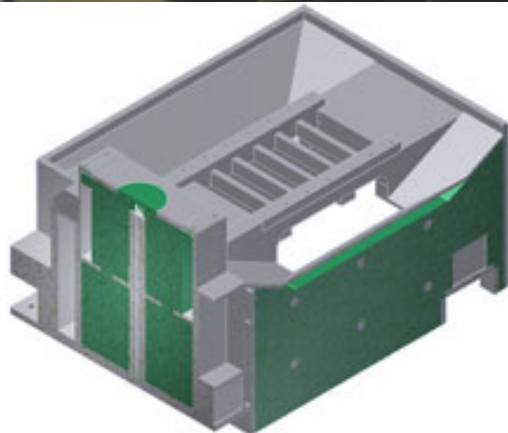
Machines Features:

1. Interchangeable collets chuck and jaw chuck for different parts operation.
2. Standard gantry type turret provides the most fast and efficient turning.
3. Optional servo turret provides more flexible and faster tool change arrangement.
4. Mineral stone base generates the super finish surface and longer tool life.
5. Powerful vector torque motor option let the power up 10HP.
6. High rigid spindle head unit can bear the spindle up to 60mm capacity.
7. The linear guides up to 30mm and 25mm ball screws guarantee the long-term rigidity and accuracy.
8. Coolant through drill option provides efficient and smooth drilling.





The new model of 5th axis machine tool allows the cutting of complex flexible parts to a high degree of accuracy.





The turret through drill - This machine is a good choice for large diameter turning, vibration and chatter suppression.

NCL - 30 / 42 / 50 / 60 Gantry and Turret CNC TEACH-IN LATHE

Machine Specifications :					
Specifications	Unit	NCL-30	NCL-42	NCL-50	NCL-60
Max.Turning Diameter	mm	30	42	50	60
Max.Turning Length	mm	210	210	180	180
Stroke of X	mm	380	380	380	380
Stroke of Z	mm	220	220	220	220
Main Spindle Bore	mm	42	56	62	76
Bar Capacity	mm	30	42	50	60
Main Spindle Nose		A2-4	A2-5	A2-6	A2-6
Main Spindle speed	r.p.m	40-6,000	40-6,000	40-3,000	40-3,000
Main Spindle Power	HP	5	5	10	10
Main Spindle Power	PCS.	6 Turning + 4 I.D	6 Turning + 4 I.D	6 Turning + 4 I.D	6 Turning + 4 I.D
Tool diameter	mm	16	16	16	16
Boring tool diameter	mm	Ø20	Ø20	Ø20	Ø20
X axis servo motor	Kw	1	1	1	1
Z axis servo motor	Kw	1	1	1	1
Rapid Transverse	M/min	15	15	15	15
Hydraulic Pump	HP	1	1	1	1
Dimension	M	2.3 x 1.3 x 1.5	2.3 x 1.3 x 1.5	2.3 x 1.3 x 1.5	2.3 x 1.3 x 1.5
Machine Weight	Kgs	3000Kgs	3100Kgs	3300Kgs	3400Kgs

■ Design and specifications are subject to change without prior notice.

Standard Accessories :

- Operative Lamp
- Tool Box
- Automatic Lubricant System

Optional Accessories :

- Auto Bar Feeder Machine
- Transformer
- Part Catcher
- Chip Conveyor

